



Week of 1-12-2012

Weekly Envelope content will appear in the following order:

Principal's Letter

Parent Update for Drop-off at St. Mary School

Drop-off Guidelines at St. Mary School from 7:45 to 8:10 (Revised Jan. 11 2012)

Directions to St. Mary School, Riverside for Drop-off

PIE Presents: The Family Dance

Winter Picnic

St. Patrick's Day Party Annual Fundraiser March 3, 2012

January 12, 2012

Compassion is not religious business, it is human business, it is not luxury, it is essential for our own peace and mental stability, it is essential for human survival.

~ Dalai Lama ~

Hello St. Mary Families,

It's snowing, the beautiful snow is falling and I think it looks so peaceful! Please remember to have the children wear boots, hats, scarves and mittens/gloves, the cold and flu season is clearly here now that the weather has taken a turn for the ...well, has actually become winter for real! The children know the rules, but a reminder never hurts ... please help us enforce the no throwing snow at all rule, no one wants anyone to get hurt and accidents are just that, unintentional incidents that result in someone getting injured. Enjoy the snow, and please do not throw it! Remember that cars will have a much harder time stopping in this weather, so please remind the children to be extra cautious when crossing the street and walking in parking lots.

On this same note, the arrival procedure is going very well, and we are diligently working on improving the departures! With the snow now here it will be important for you to remember that the primary drop off is in the Church Parking Lot off Herrick Road. The snow banks are going to get too high for the drop off to run smoothly out front, so please try to remember that the drop off in the Church Parking Lot will be much easier on you and the children. At this time, I also want to remind both parents and children that while you may have a preferred door to enter, you may enter the doors of the Parish Center so you don't have as far to walk outside! Please see the update and revised diagram on the school website. Thank you for your continued patience and

cooperation with this!

This year so many things are new, but we tried something new with having children bring in a ream of paper. The teachers, staff and I are grateful for that, as it has been a real money saver! We are, however, in need of more paper, if you can send in a ream with your son/daughter, we would be most appreciative! This is not mandatory, just a request from us to you. Thank you in advance for your consideration in this matter!

Student Information:

- Yesterday our students were judged at both the History and Science Fairs. I was so proud of the students as they prepared and then presented to the judges. They were really ready, and think they all deserve to be recognized for their hard work and commitment to these projects; however, we don't have the room here, so just know every 7th and 8th grader deserves a pat on the back for their hard work! I'd like to send a note of thanks to their teachers as well, as they spent many hours preparing, grading, and supporting the students! Thanks!

The following projects will be moving on to the Regional History Fair:

In the Documentary Category
Shannon Donnelly and Maggie Lyons – The Beginning of

a New Era, The Columbian Exposition of 1893

In the Paper Category

Danny McMahon – The 1968 Chicago Democratic Convention

Molly Cawley – Our Lady of the Angels School Fire

Katherine Cawley – The Haymarket Riots and the Fight for the 8 Hour Workday

In the Exhibition Category

Jimmy Herdegen and Jonathon Kulhanek – Race, Poverty, and the Struggles of the Chicago Public Schools

Erin Lattner and Luci Siliunas – It's a Jungle out there!

The Union Stockyards of Chicago

Sarah Austin and Lexi Woywod – Flames of Fury

Anna Milleker and Maggie Shereck – The Chicago

Tribune: A Newspaper that Changed Chicago

The following students will be participating at the Regional Level for Science:

Danny Chambers and Conor Cawley – How Healthy Is Your Burger?

Brendan Jones and Nick Rastelli – Need for Speed

Arriana Arroyo and Theresa Mullen – The Birds, Bees and Butterflies

Clare Durkin – Accenting English

Lorelei Escobedo and Nerija Cuplinskas – Attitudes are Contagious

Charles Cornelius and Lukas Kulbis – Cost of Exhaust

Dylan Gresik – The Amazing Race

Anna Santilli – Under Pressure

Kim Burda and Kate Suess – Brain Games

Chloe McKinley – Taking Flight

Congratulations to all our students who participated. Job well done!

Upcoming Events:

- Winter Picnic – January 21 after the 5:00 pm mass.
- Family Dance sponsored by PIE – February 2
- St. Patrick's Day Party Annual Fundraiser – March 3, 2012

Please check the school website for further details for these events.

Reminders:

- Registration for Girls Volleyball (5th, 6th, 7th and 8th) is due tomorrow! See the website for more information.
- The Catholic High School Entrance Exams will be Saturday, January 14th. Good Luck to you 8th graders, you are smart, you'll do well, just relax and remember, you KNOW this stuff!
- There will be no school on Monday, January 16 in remembrance of Martin Luther King Jr.'s birthday. Have fun and see you on Tuesday!
- Pizza day is Wednesday, January 18th

- The next PIE meeting is January 18th
- There will be an Ecumenical Service on Wednesday, January 18 at 9:30 AM in Church. This will be available to many of our students, parents are welcome. It is a liturgy of the word, a homily and songs, a good time to contemplate and pray for all Christians to come together and worship. The motto for this week of prayer for Christian unity is: "We will all be changed by the victory of our Lord, Jesus Christ."
- The 2nd Quarter ends on Friday, January 13th. Reports card will be sent home on Friday, January 20th.

God shows us patience and compassion in everything He does. Let's remember to emulate Him as we face changes in our lives either at work, at home, and/or at school. I hope 2012 is finding everyone happy and healthy.

Peace,

Ms. Diane Simonaitis
Principal

Parent Update for Drop-off at St. Mary School 7:45 to 8:10 AM daily

January 11, 2012

Dear St. Mary School Parents and Guardians,

SUCCESS!

Our South Lot is SIGNIFICANTLY safer for people walking their children to the school from their parked cars. Parish Center Drop-off line moves fast and safe.

DEFEAT.

Now the bad part...Many drivers are getting into the Main School Entrance Drop-off line and there are back-ups at peak drop-off time causing:

1. Students to exit cars before the drop-off zone (at neighboring drive and in front of fire hydrant)
2. Confusion among well intentioned drivers (passing or parking permitted?)
3. Frustration and aggravated drivers speeding by (just get me out of here!!!)

THE CURE:

- **Main Drop-off is at the Parish Center doors between orange flags.** This line is moving fast and safe each the morning, so please try to use this entrance as your primary drop-off location! Snow is easily removed in the lot and should be cleared very well for students to unload.
- **Secondary Drop-off is at Herrick Doors between orange flags.** This line backs up at peak drop-off time and gets a bit crazy and dangerous. Snow will soon make this a worse situation. We may not be able to clear the snow as we had hoped. Please consider using the Parish Center Drop-off location instead. At least give it a try.

All drivers who feel they have been effected by the changes should check out the **new direction map** provided to understand the best routes to St. Mary through our beautiful but difficult-to-navigate Village of Riverside

(see: *Directions to St. Mary School, Riverside for Drop-off* map).

Parents who used to use the South Lot for Drop-off, thank you for your cooperation, persistence and input! Please review the different options to arrive at St. Mary on the *Directions to St. Mary Riverside for Drop-off* map. It is an attempt to help parents understand some of the best routes to get to school through Riverside for our new access from Herrick through the East Lot.

Parents who have always used the Main School Entrance have students who are used to entering here. The young ones especially have a hard time changing their routine and finding their school rooms from a different entry, so they will likely continue to drop off here. Please try the Parish Center (PC) Drop-off if you feel your kids are able – even if they may not be willing at first. It's a fast way through and even better if you live to the south.

Drop-off Guidelines at St. Mary School, Riverside

To be followed from **7:45 to 8:10 AM daily**. (Revised Jan. 11, 2012)

REMEMBER: CELL PHONE USE IS ILLEGAL IN SCHOOL ZONES.

"DROP-OFF ONLY":

Parish Center Doors (primary Drop-off location):

1. Traffic enters the **East Parking Lot** from Herrick and stops at the area in front of the **Parish Center doors**.
2. Drop-off Zone is located **between orange flags** – 6 cars can unload at a time – **pull forward to front flag**.
3. Children may only exit vehicles from the **passenger side** of car.
4. Drivers continue straight out of the parking lot through the southeast exit as designated on the included **Traffic Pattern** plan.
5. Drivers **may turn either direction – east or west – upon exiting** the lot at the southeast drive.
6. Drivers: absolutely **NO PASSING allowed** in the Drop-Off Only lane – delays will be brief.
7. **Pedestrians will be crossing** at all sidewalks and also at the pinch-point between the East and South Lots. Please be courteous and alert drivers.

Main School Entrance (secondary drop-off location):

1. Parents and caregivers may drop children off at the curb in front of the school **before the intersection of traffic** west of the main cross-walk.
2. Drop-off Zone is located **between orange flags** – 6 cars can unload at a time – **pull forward to front flag**.
3. **NO left-hand turns** are allowed onto "Little Herrick" in front of the school.
4. Traffic merges into **one lane** before the Herrick crosswalk. Please be courteous.
5. Children **may NOT be dropped off on Herrick after traffic merges** – please proceed to the parking lot at that point for safety of all students and staff.

"PARK AND WALK":

1. Parents and caregivers may enter the **South Parking Lot** from the southwest entrance on Burlington Street, park, and walk their young children to the door.
2. Parking during drop-off will **only** be permitted at the center parking, five (5) rows to the south of the lot.
3. Vehicles exiting the parking area **must merge** into the south-bound line of traffic and exit the parking lot through the southeast exit as designated on the included aerial plan of the School.
4. **No "dropping off" in the park and walk area is allowed.**
5. Two-way traffic is prohibited at drop-off time in both East and South Lots.

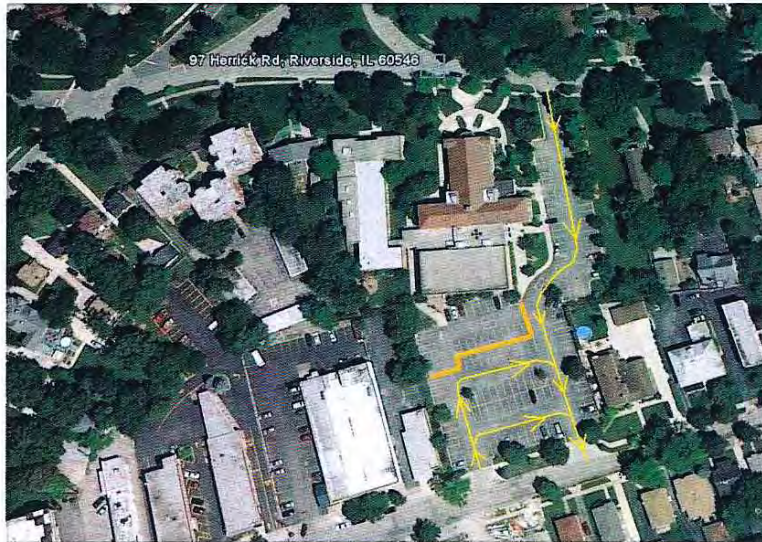
STUDENTS WHO WALK OR RIDE BIKES:

Please note that several children walk or ride bikes to school.

1. A walkway from the Burlington Street sidewalk to the school on both the East and West sides of the South Lot is indicated using cones.
2. From the Herrick side, pedestrian crossings are indicated north of St. Mary Church and pedestrians cross our East Lot entrance at the sidewalk.
3. **DRIVERS: PLEASE BE AWARE OF THESE PEDESTRIAN STUDENTS.**

Drop-off Guidelines at St. Mary School, Riverside Traffic Pattern

- Traffic comes from southbound Longcommon Road, turning East (left) onto Herrick and left into East Lot at St. Mary School.



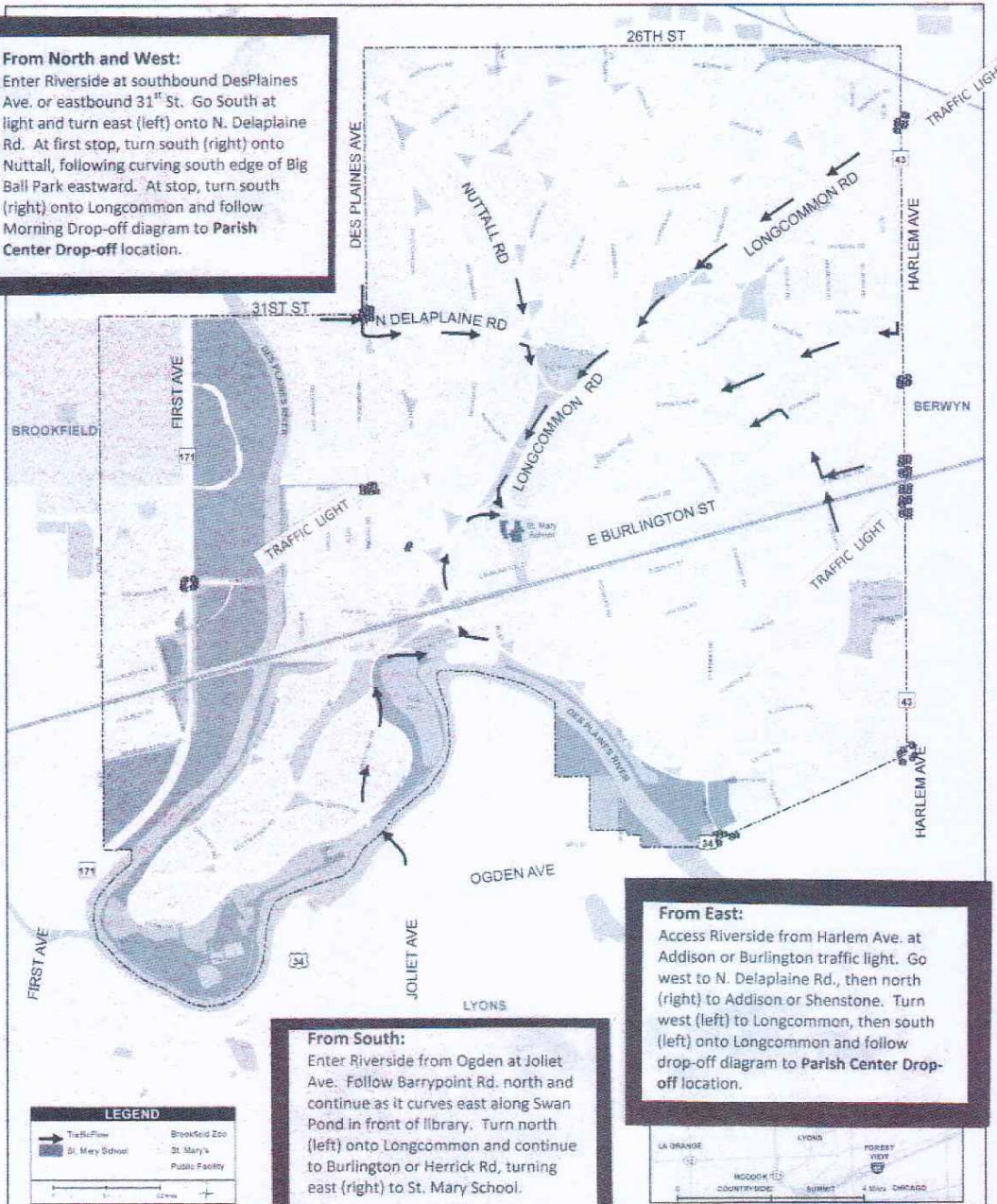
- Drop off Zone is in front of Parish Center Doors as indicated by orange flags and cones daily.
- **NO DROP OFF ALLOWED IN SOUTH LOT IS PERMITTED** for the safety of those walking with young students.
- South Lot is designated only for parking. If parents need to park after dropping off students at PC doors, proceed to Burlington, turn right and enter South Lot from street to park.
- Traffic in South Lot moves to the East **ONLY** during the morning Drop-off. No 2-way traffic permitted at morning Drop-off.

**St. Mary School asks parents to cooperate with
Drop-off Guidelines at St. Mary School, Riverside
for the safety of students and efficiency of Drop-off time for all concerned.**

Directions to St. Mary School, Riverside for Drop-off

From North and West:

Enter Riverside at southbound DesPlaines Ave. or eastbound 31st St. Go South at light and turn east (left) onto N. Delaplaine Rd. At first stop, turn south (right) onto Nuttall, following curving south edge of Big Ball Park eastward. At stop, turn south (right) onto Longcommon and follow Morning Drop-off diagram to Parish Center Drop-off location.



From South:

Enter Riverside from Ogden at Joliet Ave. Follow Barrypoint Rd. north and continue as it curves east along Swan Pond in front of library. Turn north (left) onto Longcommon and continue to Burlington or Herrick Rd, turning east (right) to St. Mary School.

From East:

Access Riverside from Harlem Ave. at Addison or Burlington traffic light. Go west to N. Delaplaine Rd., then north (right) to Addison or Shenstone. Turn west (left) to Longcommon, then south (left) onto Longcommon and follow drop-off diagram to Parish Center Drop-off location.

SAINT MARY SCHOOL



**PIE PRESENTS: THE FAMILY DANCE
THURSDAY, FEBRUARY 2, 2012**

PRE-K - 5TH GRADE 6:30 - ENDING PRECISELY @ 8:00 PM

CHILD/CHILDREN MUST BE ACCOMPANIED BY AN ADULT

6TH - 8TH GRADE 8:00 - 9:30 PM

A PARENT /GUARDIAN MUST REGISTER HIS/HER CHILD UPON ENTERING THE DANCE

**NO CHILD WILL BE PERMITTED TO LEAVE THE DANCE
UNLESS ACCOMPANIED BY A PARENT/GUARDIAN**



Join Us For A

Winter Picnic

January 21st After The 5:00PM Mass

Please bring your family and friends for a fun
"summer" night.

Hotdogs, chips and drinks

For only \$5 per family

Games and music

Looking forward to seeing you there!!!



sponsored by the evangelization team



St. Patrick's Day Party
Annual Fundraiser
March 3, 2012

Big An Aimsir An Dea-Roll

...that's Gaelic for 'Let the Good Times Roll'! Save the date for St. Mary's Annual Spring Fundraiser. An Irish band, dinner, live and silent auctions, raffles, and libations will set the stage for what promises to be a fun night for all.

Show your support for St. Mary School and all of our young O'Spartans by sharing your time, talent and treasure to ensure that this event is a huge success. Please e-mail any of the volunteers listed below with your donations or offers to volunteer.

SLAINTE.....Cheers!

Event Hosts:

Melissa Burns – burnsfam800@sbcglobal.net
Peg Donnelly – jpsdonnelly@comcast.net
Bill Przybylski – bprzybylski@windsoroutdoor.com
Jim Sullivan - jds156@sbcglobal.net

Event Chairs:

Ad Book-Steffanie Woywod – steffanie.j.woywood@jci.com
Classroom Art-Michelle Cronin – mcronin@ameritech.net
Classroom Baskets-Holly Simmons – hollymariesimmons@yahoo.com -
Decorations- Jim Donnelly - jpsdonnelly@comcast.net
Raffles- Colleen Ramonez – colleen.ramonez@wnco.com
Silent Auction Items-Denise Cushaney – cushaney@gmail.com
Publicity-Peggy Lyons@plyons163@comcast.net
